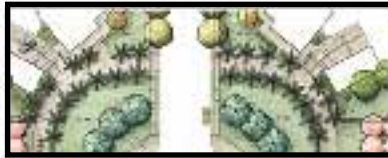


A N G E L A P R A V E T T O N I

Landscape Design
Consulting
Graphic Communication

Bio, Resume & Work Samples



Landscape Architecture,
Planning, and Graphic Design
13 Pineview Court, Pleasant Hill, Ca. 94523
925.899.1232 angelapravettoni@gmail.com

Landscape Design
Consulting
Graphic Communication



Since 1998

I have been a team member in San Francisco Bay Area firms, accumulating over nine years of professional experience in Landscape Architecture, Land Planning and Graphic Design. My project background includes: the public sector, private residential, master planned communities, campus and resort planning, educational and business campuses, and commercial development. In addition, I have acquired hands-on construction knowledge while employed with a design-build firm in the Chicago Region.

I believe the best way to learn is through teaching others. I have enjoyed passing on my knowledge to others as a teaching assistant for 'Graphic Language in Landscape Architecture' at Purdue University, Mike Lin's ten day intensive graphic workshop in Manhattan, Kansas, as well as Illustrator I and II and Photoshop I at San Francisco State College of Extended Learning. As the appointed mentor at Ripley Design Group, I was able to facilitate acclimation by training new hires.

I work and collaborate well with others as a project team member. I am also skilled and organized at scheduling and managing multiple projects and delegating workload. I am direct and diplomatic when managing people and make it practice to encourage their exposure to all aspects of a project.

My passion encompasses all aspects of Landscape Architecture and Planning as a profession including business development, marketing, and standards. By instituting standards for file and drawing structure, and creating templates in AutoCad for construction documents and details I was able to ensure consistency within the office and streamline workflow. Using my knowledge of Adobe Creative Suite I have been able to get involved in marketing and business development by designing firm brochures, the Ripley Design Group website, and business cards.

Professional Mission

- To provide creative and well-designed environments while, working within the client's timeline and the project budget.
- To provide a high-level of service to clients.
- To be cognizant of and coordinate with the other team consultants in order to anticipate and minimize conflicts and ensure a successful project.
- Work to provide a cohesive project in which the architecture and existing environment combine to create one vernacular.

Landscape Design
Consulting
Graphic Communication



Education

Purdue University, West Lafayette, In (May 2000)
Bachelor of Science in Landscape Architecture emphasis on Planning
Actively pursuing licensure (3 out of 5 exams completed)

San Francisco State CEL, San Francisco, Ca (Sept 2000 - Dec 2001)
Certificate Student in Digital Design and Production

**Professional
Experience**

Guzzardo Partnership, San Francisco, Ca (Aug 2008 - Present)
Project Manager
Project types include campus planning, Urban infill, Roof top (Podium) projects, Harbour planning and design.

Ripley Design Group, Walnut Creek, Ca (Aug 2004 - Present)
Principal
Work directly with clients on projects from conception to completion including, but not limited to: design preliminary plans for entitlements, create presentations using Photoshop, Illustrator and Indesign, manage production of construction document packages, respond to city plan check comments, and perform intermediate and final site inspections. Conduct weekly team meetings for project scheduling. Train new employees. Create and maintain standards for all AutoCad and Adobe Creative Suite drawings. Create city RFP proposal packages. Design collateral and website.

NUVIS, San Ramon, Ca (Sept 2003 - July 2004, Apr 1998 - Dec 1998)
Project Manager, Intern
Manage projects from early stages through construction documents. Draft construction documents using AutoCad. Render preliminary plans using markers and color pencils. Provide graphic design support for competition entries. Illustrate by freehand for preliminary plans. Draft construction documents using rapidograph pens and mylar during internship.

Royston Hanamoto Alley and Abey, Mill Valley, Ca (May 2002 - April 2003)
Landscape Designer
Create competition entries for Caltrans projects using Photoshop and Illustrator. Draft construction documents for Caltrans projects using Microstation. Draft construction documents using AutoCad.

Perkin's Design Group (Formerly Eldon Beck Assoc.), Point Richmond, Ca (May 2000 - April 2003, Summer 1999)
Landscape Designer, Intern
Draft large master planned ski resorts using AutoCad. Create diagrammatic and illustrative plans for master planned resorts using hand graphics, Illustrator, and Photoshop. Prepare 3D modeling exhibits using AutoCad and hand graphics for Berkeley Laboratory Master Planning.

**Related
Experience**

Mike Lin Graphic Workshop, Manhatton, Ka (Feb 1997, Apr 1997)
Teaching Assistant
San Francisco State CEL, San Francisco, Ca (Sept 2000 - Dec 2001)
Teaching Assistant Photoshop I, Illustrator I and II
Purdue University, West Lafayette, In (3 Semesters)
Teaching Assistant 'Graphic Language for Landscape Architecture'

John Laing Homes Roubion Model Homes San Ramon, Ca.

(MAME XXX - 2006 Best Model Landscape Design - Detached over \$900,00)



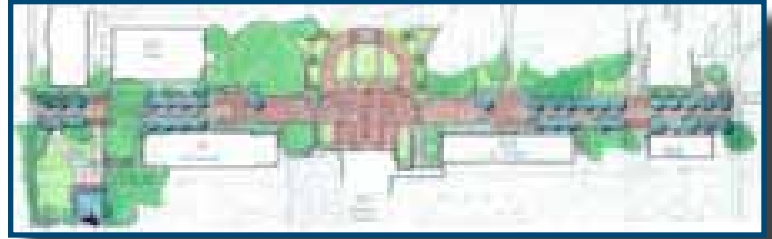
Role: Project Manager, Preliminary Design, Design Development, Elevation Graphics, Consultant Team Coordination, Construction Detailing.

Florsheim Homes Atwater Atwater, Ca.



Role: Project Manager, Design Development, Consultant Team Coordination, Construction Documents.

Santa Clara University Santa Clara, Ca.



Role: Design Team Memeber, Preliminary Design for Alviso Street (Portion of Larger Campus Plan Design), Illustrations and color Renderings.

KenMark, Ocean Colony Partners Carnoustie Half Moon Bay, Ca.



CARNOUSTIE
Half Moon Bay, California
Preliminary Golf Course Frontage Plan

Role: Project Principal/Project Manager, Preliminary Design for Community and Models, Design Development, Plan Illustration/Rendering, Elevation Graphics, Consultant Team Coordination, Construction Documents Management for Model Complex Landscape and Production Landscape.

Harbour, South Bay, Ca.



Role: Project Manager, Preliminary Planning and Design, Design Development, Plan Illustration/Rendering, Elevation Graphics, Consultant Team Coordination.



ANGELA PRAVETTONI



Landscape Design
Consulting
Graphic Communication
13 Pineview Court, Pleasant Hill, Ca 94523
925.899.1232 angela@pravdesign.com